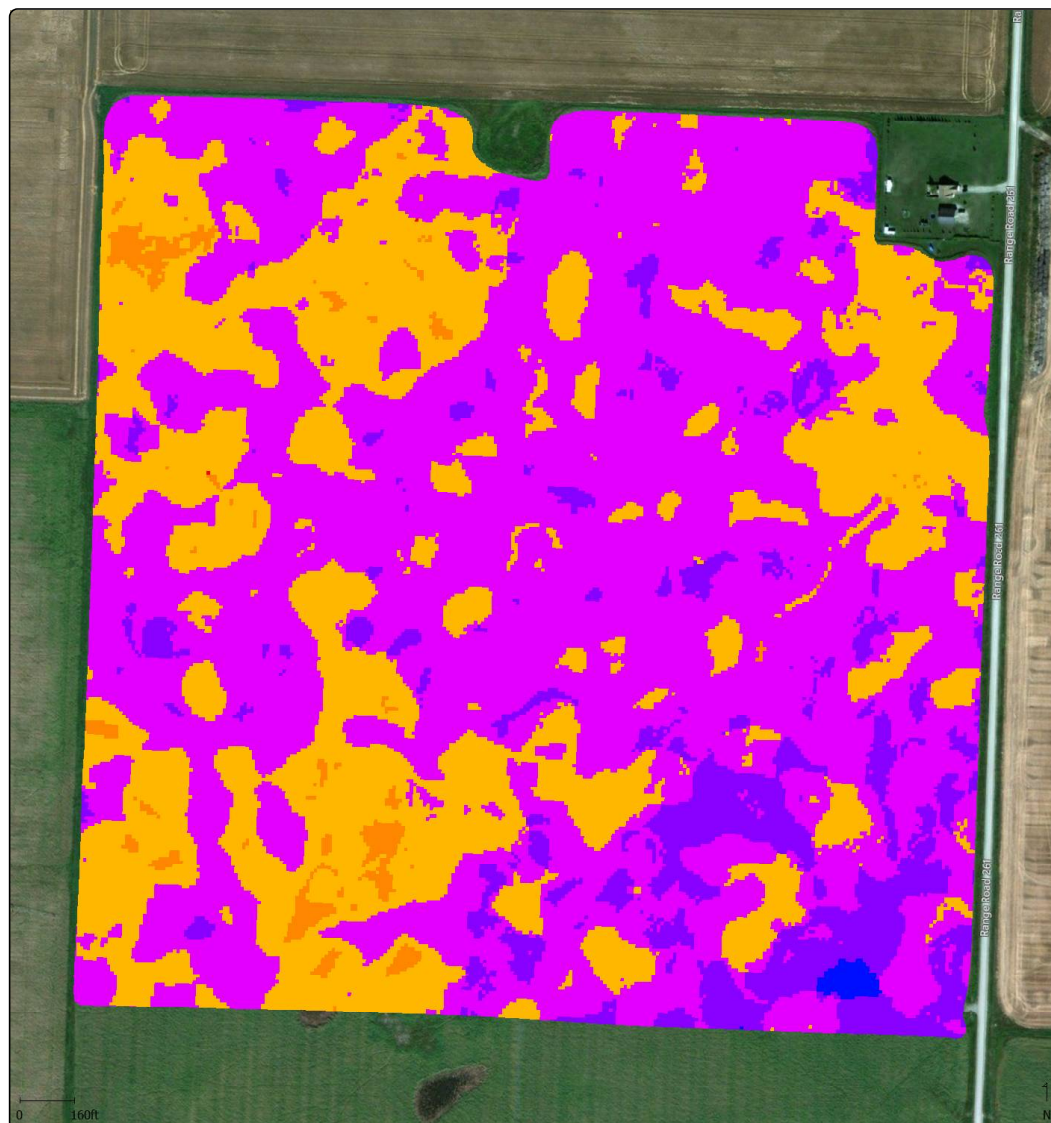


Clubroot Risk Assessment



Count : 67647

Average Clubroot Risk : 6.713 (1)/ac

Minimum Clubroot Risk : 4.000 (1)/ac

Maximum Clubroot Risk : 9.000 (1)/ac

Clubroot Risk ((1)/ac)

9.00 - 10.00	(0.00 ac - 0.0%)
8.00 - 9.00	(2.17 ac - 1.4%)
7.00 - 8.00	(49.67 ac - 32.1%)
6.00 - 7.00	(89.17 ac - 57.6%)
5.00 - 6.00	(13.33 ac - 8.6%)
4.00 - 5.00	(0.36 ac - 0.2%)
3.00 - 4.00	(0.00 ac - 0.0%)
2.00 - 3.00	(0.00 ac - 0.0%)
1.00 - 2.00	(0.00 ac - 0.0%)
0.00 - 1.00	(0.00 ac - 0.0%)



The above legend shows the Clubroot Risk number.
Its a sum of several factors that can contribute to clubroot.
On a scale of 1-10, 1 being low risk and 10 being high risk.

The Clubroot risk assesment map is an estimation
on where clubroot could show up. Usefull to aid in
scouting a field, it does not suggest clubroot will be
found in the higher risk areas,
but aims to assit in finding the higher risk areas easier.

