

## Ag Leader® Integra, Versa, and Compass Version 6.6 Firmware Release

Ag Leader Technology is pleased to announce the release of new firmware. Features and improvements in this version are listed below. This free upgrade is available for download from <http://www.agleader.com>.

### IMPORTANT!

- A. Upgrading to version 6.6 is only possible if display is currently on version 4.5 or greater. If on prior version, you must first upgrade to 4.5.
- B. It is recommend that a backup be created prior to upgrading display firmware
- C. SMS version 15.2 is required to read .agdata or .agsetup files from version 6.6

### [New in 6.6](#)

#### General (Ag Leader Integra, Versa, Compass)

- **NEW:** Chinese language for on screen text. English keyboard for user input
- **NEW:** On screen heading button to change mapping between forward and reverse (Figure 1)
- **ENHANCED:** Vehicle/implement modeling when making 3 point turns and backing into corners for all implements
- **ENHANCED:** Increased maximum metric row spacing to 300 cm

#### DirectCommand (Ag Leader Integra, Versa)

- **FIXED:** Empty spreader bin with spinners disabled using manual valve control
- **FIXED:** Application Report maps using Direct Injection
- **FIXED:** Mapping issues switching Hardi SafeTrack between auto and manual
- **FIXED:** Crash importing Product Mix from SMS containing certain products

## Harvest (Ag Leader Integra, Versa)

- **ENHANCED:** Display units of lbs/acre when harvesting fescue and clover grass

## GPS and Guidance (Ag Leader Integra, Versa, Compass)

- **ENHANCED:** Warning when GPS differential becomes degraded running StableLoc
- **FIXED:** Crash when reset to defaults performed on GPS1500

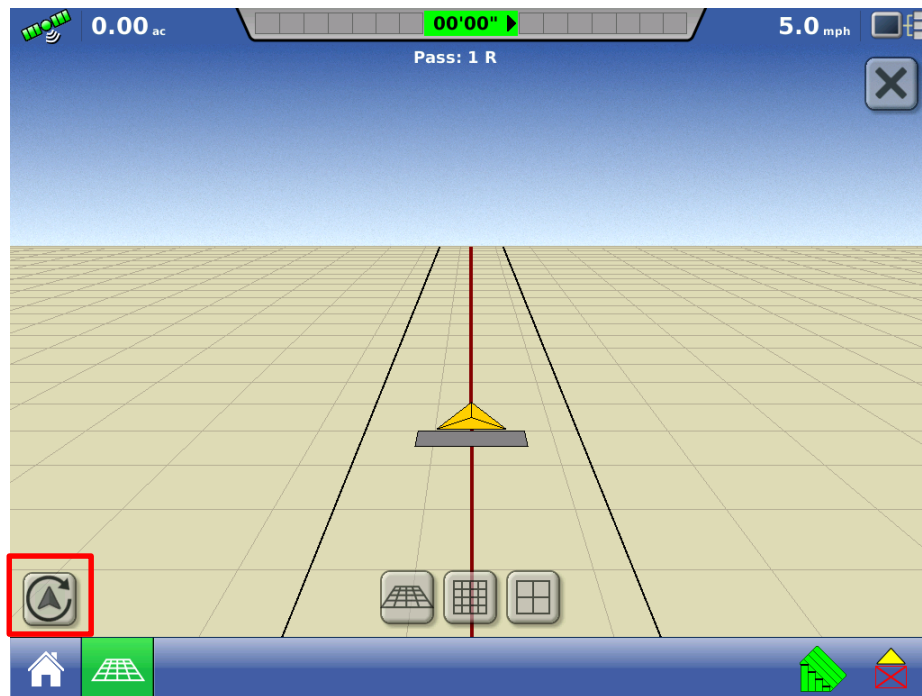


Figure 1 – Heading Change Button

## [New in 6.4](#)

### General (Ag Leader Integra, Versa)

- **FIXED:** Increased character limit for product names

### GPS and Guidance (Ag Leader Integra, Versa, Compass)

- **ENHANCED:** StableLoc with GPS 6000/6500 to eliminate position drift on startup
- **FIXED:** Upgrading Relay in select foreign languages (Danish, Dutch, Croatian, Czech, Spanish, Swedish, Polish)
- **FIXED:** GLIDE initialization on startup with GPS 6000

## [New in 6.3](#)

### GPS and Guidance

- **NEW:** StableLoc Error Limit user defined accuracy setting (Figure 2)
- **NEW:** GPS Diagnostics: Throughput and Estimated Error (Figure 3)
- **NEW:** GPS Diagnostics: RTK Convergence indicator (Figure 4)
- **ENHANCED:** FW3 simplified upgrading of GPS 6500/6000 and Relays
- **FIXED:** Guidance patterns unload without saving when not accepted by steering controller
- **NOTE:** GPS 6500 enhancements require version 6.61. After devices are upgraded you must press “Reset to Defaults” in GPS setup.



Figure 2 - StableLoc Error Limit Setting

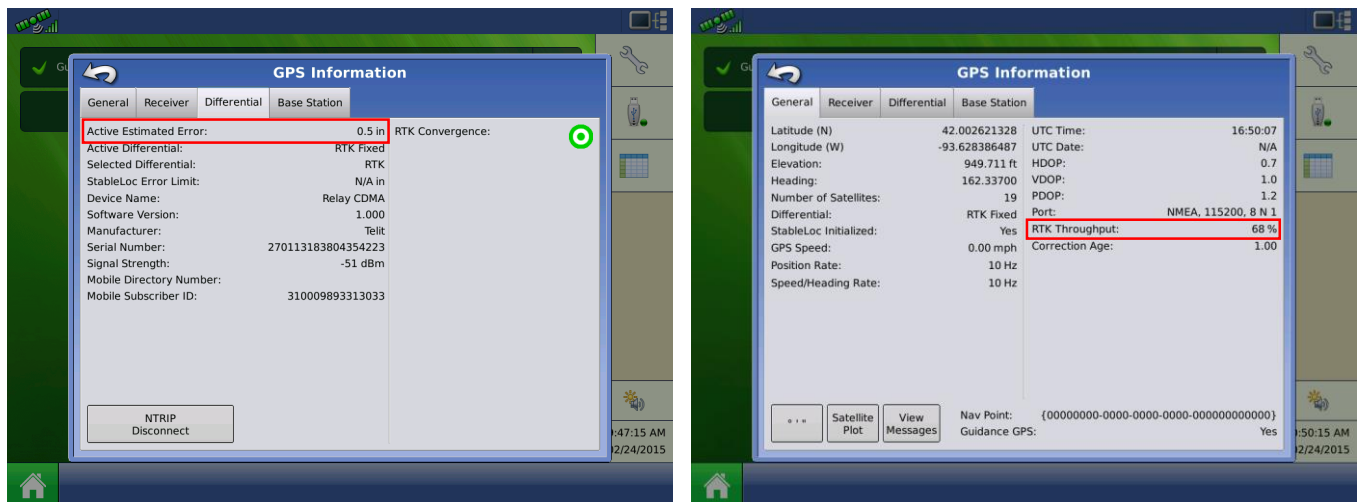


Figure 3 - Improved GPS Diagnostics

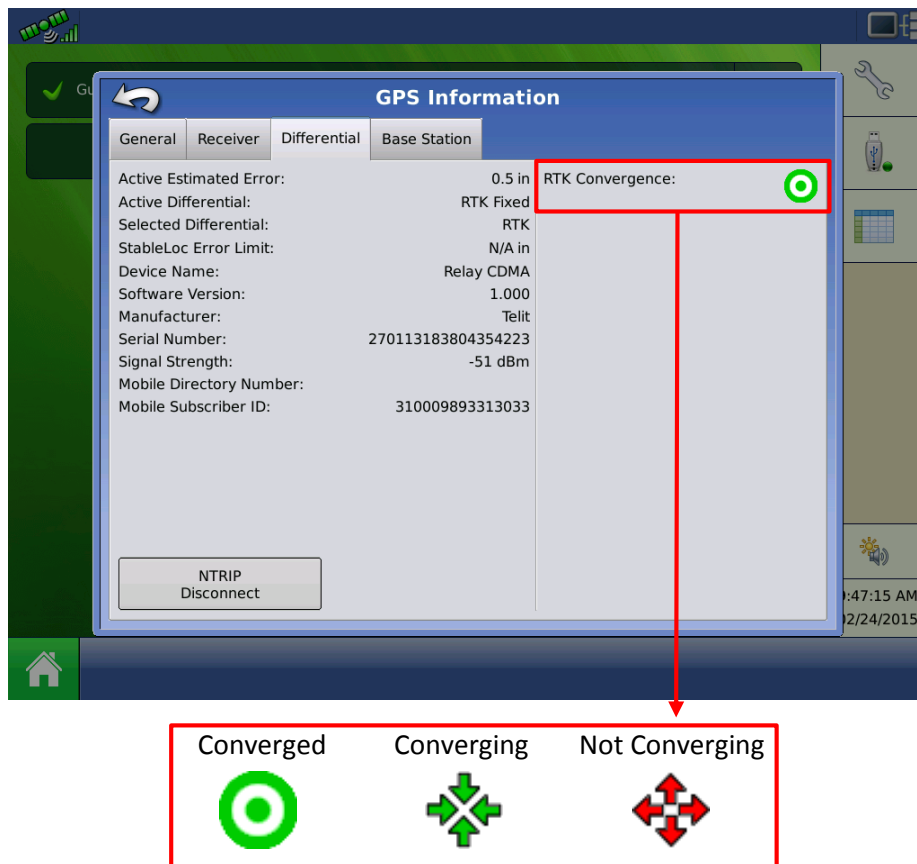


Figure 4 - RTK Convergence Indicator

## New in 6.2

### General (Ag Leader Integra, Versa, Compass)

- **NEW:** Turkish language

### SeedCommand (Ag Leader Integra, Versa)

- **ENHANCED:** Turn Compensation controlling Kinze 4900 Electric Drive planter
- **FIXED:** 1-2 Channel Hydraulic Down Force pressure drop when stopping mid-pass

### GPS and Guidance (Ag Leader Integra, Versa, Compass)

- **NEW:** Update RTK Relay firmware via display
- **NEW:** NMEA Talker – GPS 6500 and GPS 6000 compatible with Water Management and legacy systems
- **ENHANCED:** GPS 6500 diagnostics
- **FIXED:** Guidance line not reloading on power cycle running Virtual Terminal

### DirectCommand (Ag Leader Integra, Versa)

- **NEW:** Ag Leader ISO Liquid Control in North America
- **NEW:** Raven ISO Injection Pump interface with Ag Leader ISO Liquid Control
- **ENHANCED:** Vehicle/implement modeling when making 3 point turns and backing into corners

## New in 6.0

### GPS and Guidance (Ag Leader Integra, Versa, Compass)

- **NEW:** SteerCommand automated steering system
- **NEW:** GPS 6500 receiver (GLIDE, WAAS/EGNOS, TerraStar, RTK)
- **NEW:** RTK modules: Relay 400, Relay 900, Relay CDMA, Relay GSM
- **NEW:** GPS 6000 receiver (GLIDE, WAAS/EGNOS)

### DirectCommand (Ag Leader Integra, Versa)

- **NEW:** Container Sequencing for Spinner Spreader Configurations. Apply the same product sequentially from multiple containers. Ag Leader Integra only. (Figure 5 and 6)
- **NEW:** Automatically advance through Container Sequences when product container is low or empty. (Figure 5)
- **NEW:** ISOBUS Serial Application Rate module protocols: Bogballe Calibrator ICON and Calibrator 2003, UNIA Group BRZEG, Reco/Sulky Vision-X, Kuhn Quantron, LH Agro LH5000, RDS Pro.
- **ENHANCED:** View level and interact with granular product containers in mass-based units (lb/kg)

### Harvest (Ag Leader Integra, Versa)

- **ENHANCED:** Quantimeter support for Lexion 780 models

### Intellislope (Ag Leader Integra, Versa)

- **ENHANCED:** Display unlocked via firmware, system price remains unchanged. Use module with any Ag Leader Integra display.
- **FIXED:** Display performance issues installing tile in large fields

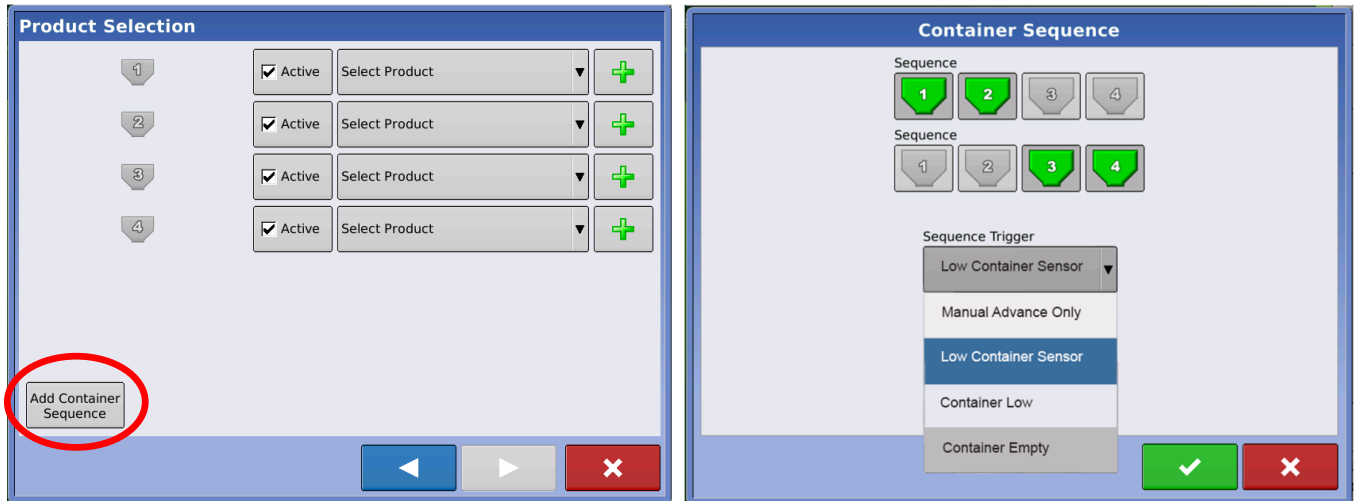


Figure 5: Configuring Container Sequencing

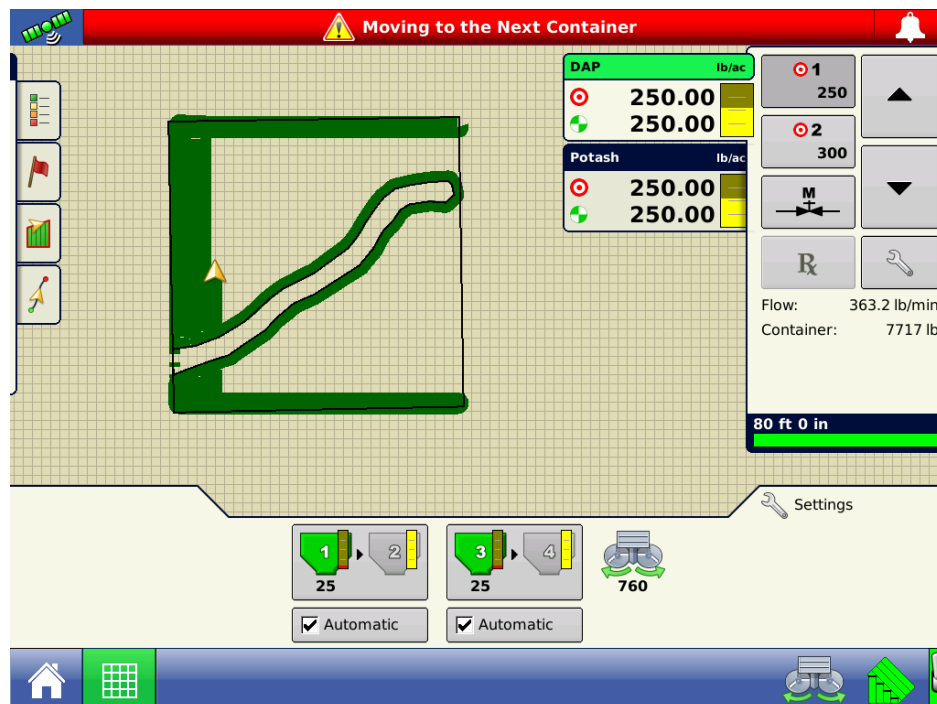


Figure 6: Map Screen with Sequenced Containers




## Instructions for updating:


1. Copy the latest upgrade file to your external USB drive. It will have a .fw2 file extension.

2. Insert the external USB drive in the display.

3. Press 

4. Then press 

5. When the upgrade dialog box appears, select the .fw2 upgrade file, then press 

6. A window will appear and will state that “The upgrade is ready to install”. It will also warn, “Do not disconnect power” and press 

7. Display will cycle power automatically

8. The display will progress through the upgrade steps, the display will automatically power cycle during the upgrade.

The upgrade is now complete